

FEV Signature Solutions

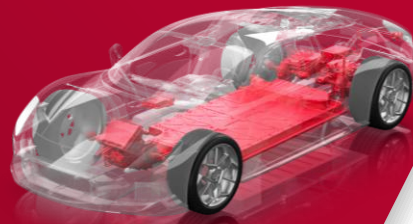
FEV Vehicle Motion Control Software for Centralized E/E Architectures



Improved driving experience by connecting chassis and powertrain features

FEV offers

- ▶ Complete Vehicle Motion Control (VMC) package or individual functions
 - Determination of the vehicle's dynamic state via 2-track model
 - Assessment of the status of all by-wire actuators
 - Centralized controls to determine the driver's longitudinal and lateral demands
 - Determination of optimized component setpoints via closed loop controls & unified motion management
- ▶ Additional services to meet your individual needs
 - Tailored software functions
 - Integration



Why FEV

- ▶ FEV is an established partner in both, chassis and powertrain domain and continuously evolving automotive industry projects throughout the last 40 years
- ▶ White box option to enable you to use FEV's solution as basis for your own development
- ▶ Customization by FEV to exactly address your needs
- ▶ Customer friendly license model, as one time license fee and tailored license scope

Reference Publications

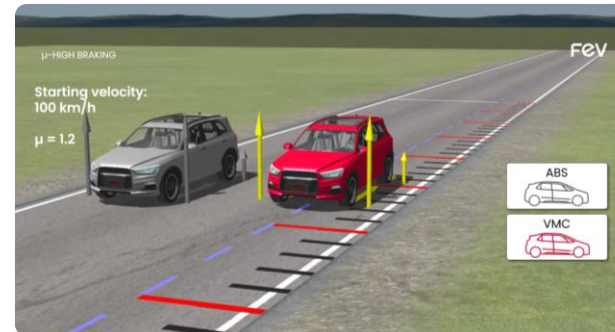
FEV VEHICLE MOTION CONTROL

2024



Voßhall, Reckeweg, Dorn

VMC –Capabilities on connecting Chassis and Powertrain Features

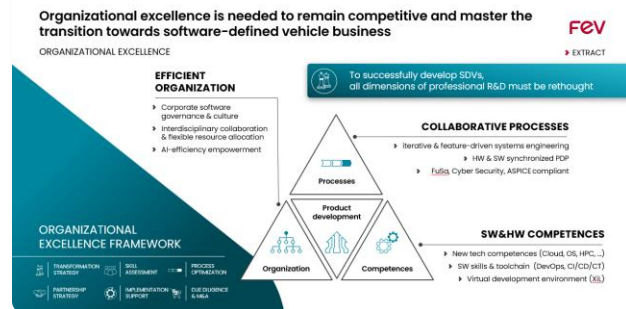


2024



Engelhard, Richenhagen, Reckeweg

SDVs and their Transformative Impact on Electric Powertrains

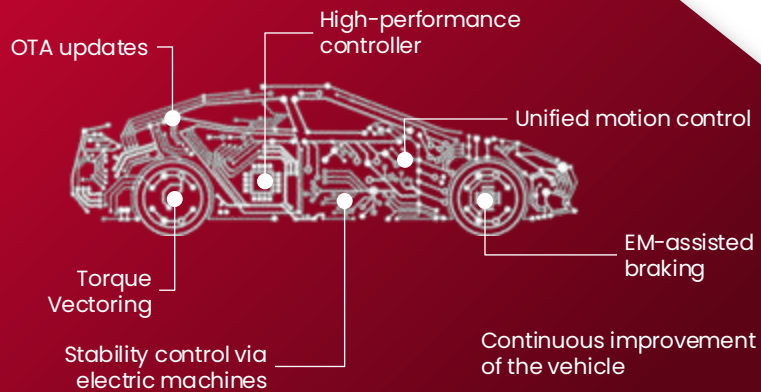


By connecting chassis and powertrain features, we improve the driving behavior through optimized function coordination

VMC continuously harmonizes and optimizes **actuator setpoints**, realizes **faster interaction** of **aligned software functions** due to reduced cross talk and leads to an **enhancement** of the dynamic vehicle capabilities

VMC

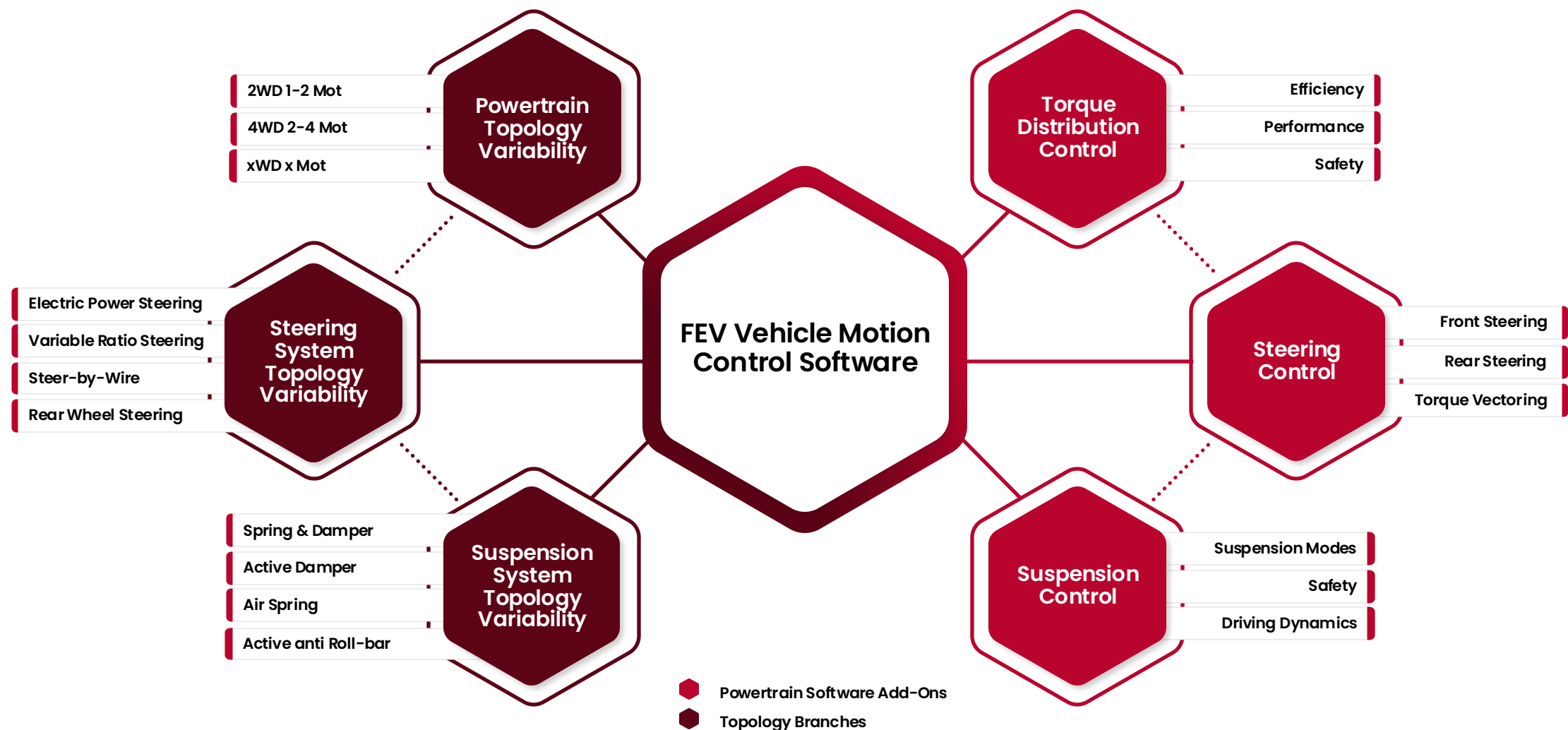
TRANSFORMATION



Main Targets

- **Ensure** synchronized chassis and powertrain controls and make use of the powertrain precision to control vehicle dynamics
- **Control** all existing vehicle domains closed loop to realize unified motion control
- **Transform** from central domain towards a software defined vehicle with zone-oriented architecture

FEV's vehicle motion control functions



Get in touch with us for further information



[www.fev.com/en/
signature-solutions](http://www.fev.com/en/signature-solutions)